

HOW TO SURVEY CORAL COLONIES

Help us locate a Giant Coral!

Please choose the type of survey that best suits you: simple, advanced or with a drone.

SIMPLE SURVEY. Diving or snorkelling

This can be undertaken during any excursion and without any dedicated equipment.

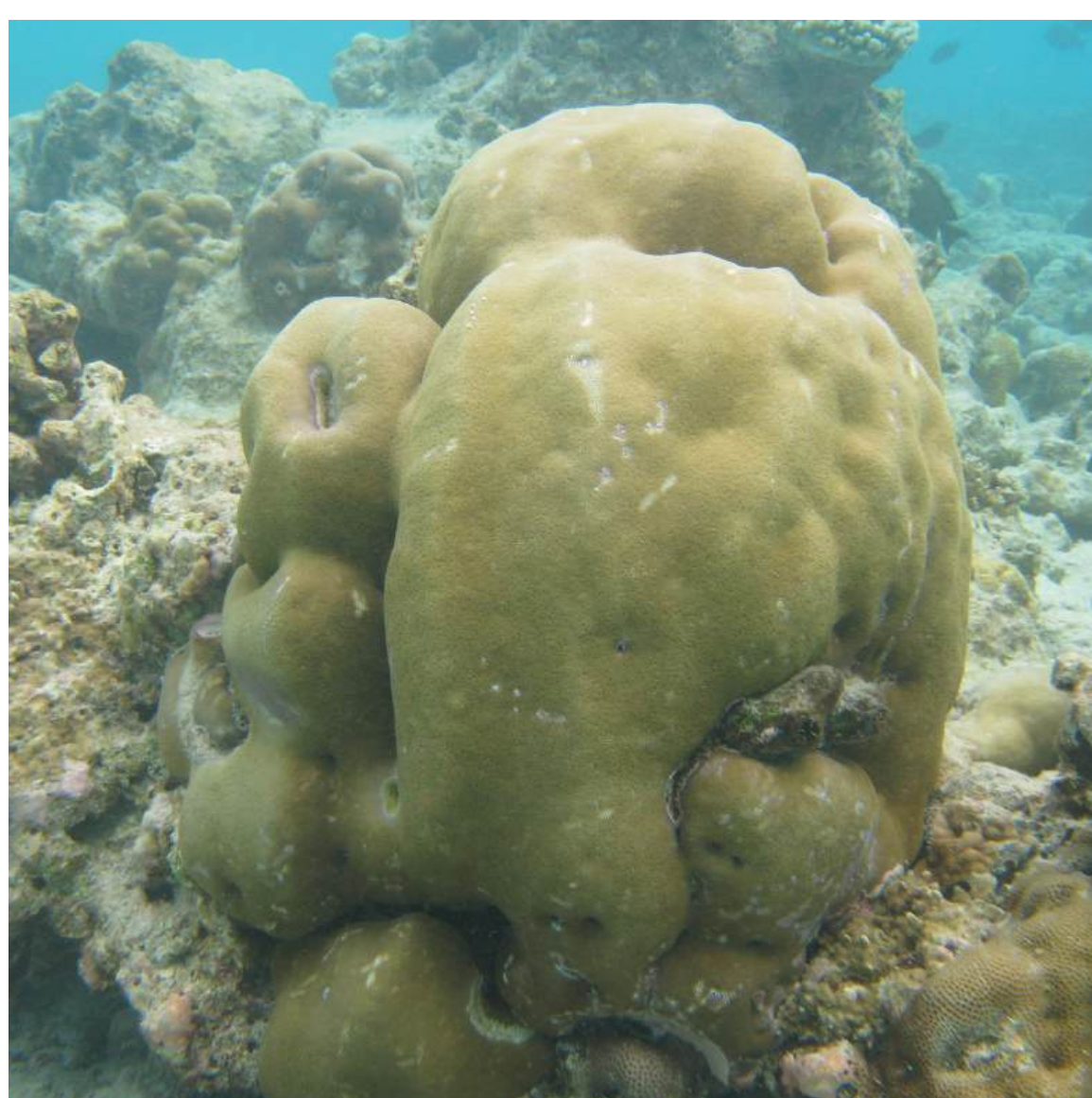
! Remember that GIANTS are corals OVER 5 METERS in diameter

Steps to take:

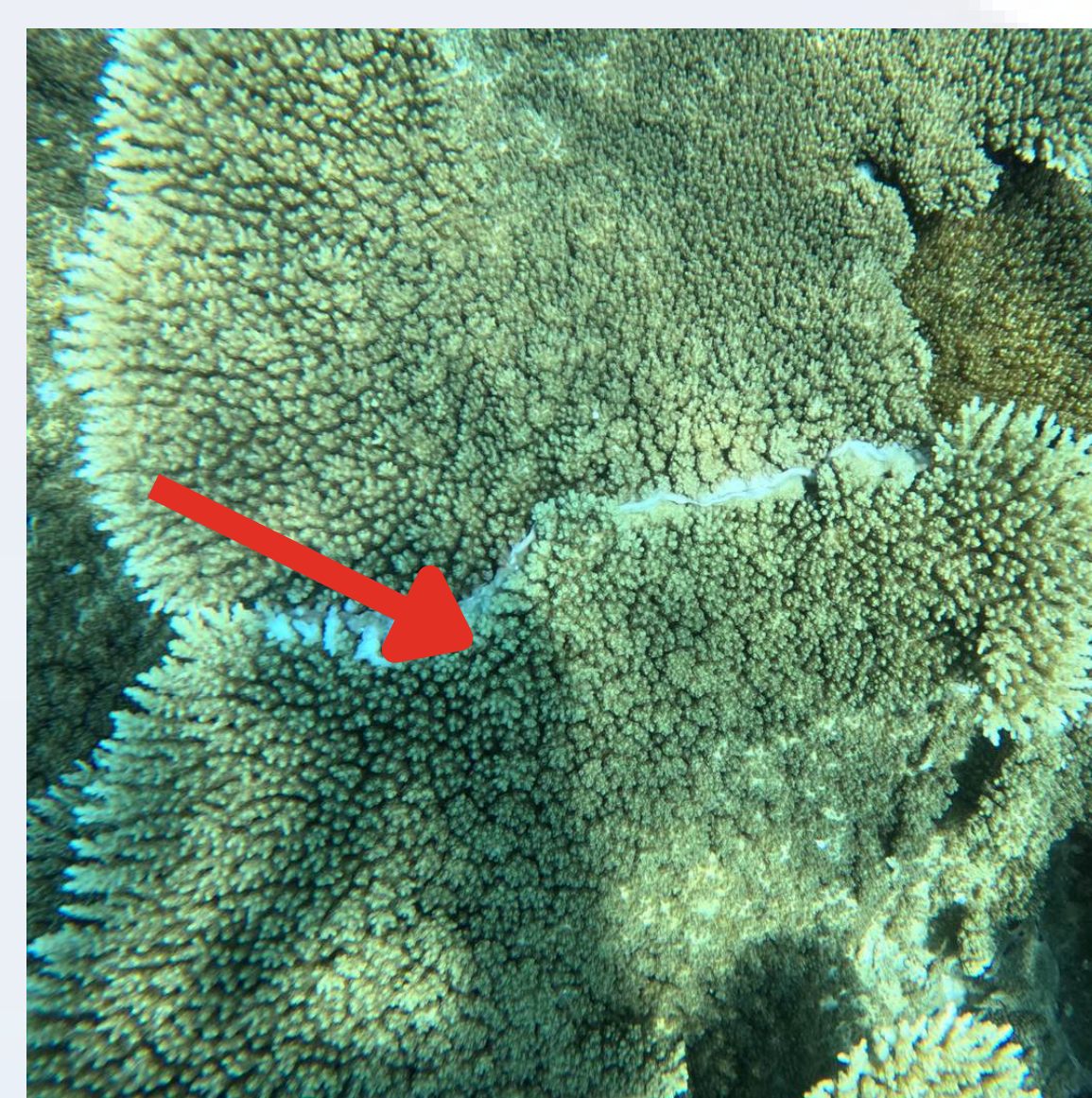
- **Grab** your diving or snorkelling equipment and any safety tool you may require. If you have a waterproof camera, we highly recommend you to carry it along;
- **Head out** to the chosen reef;
Look out for any large coral colony;

WHAT IS A GIANT CORAL COLONY?

Colonies **over 5 metres in diameter** and presenting a **continuous tissue or skeleton**.



This colony originates from a single polyp and can grow in size indefinitely.
This is ONE colony.



The white mark is a scar, typical of two different colonies fighting and **growing side by side**. This is **NOT** a colony but two.

- Estimate the **size** of the **diameter** based on these size classes:
5-10 meters
10-20 meters
>20 meters

GIANT CORALS.
FUTURE MARINE
MONUMENTS.

- **Growth form**: choose between: **massive**, **submassive**, **encrusting**, **foliose**, **tabular**, and **columnar** which are the **most likely growth forms for GIANT**.

Massive



Submassive



Tabular



Foliose



Encrusting

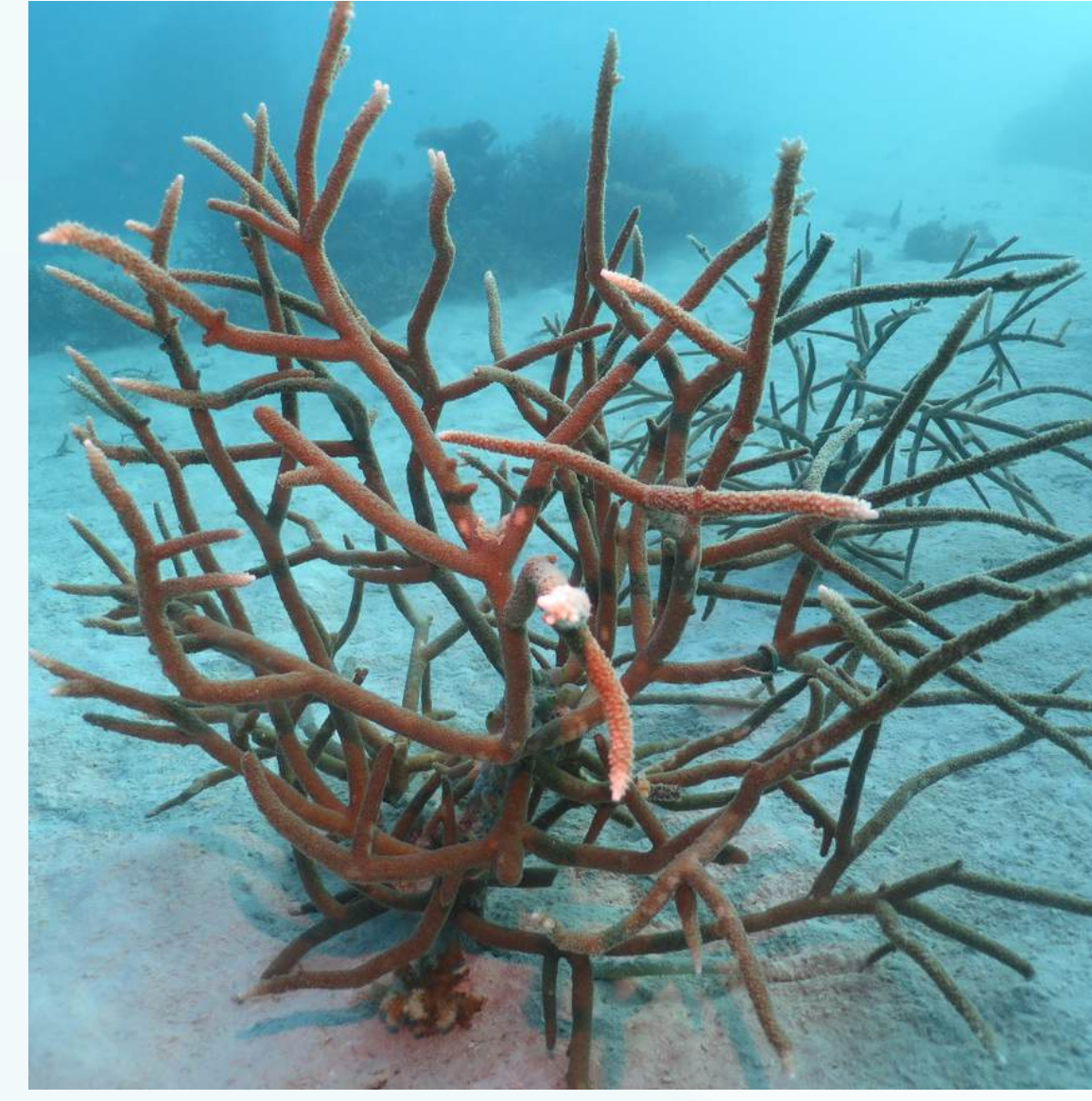


Columnar

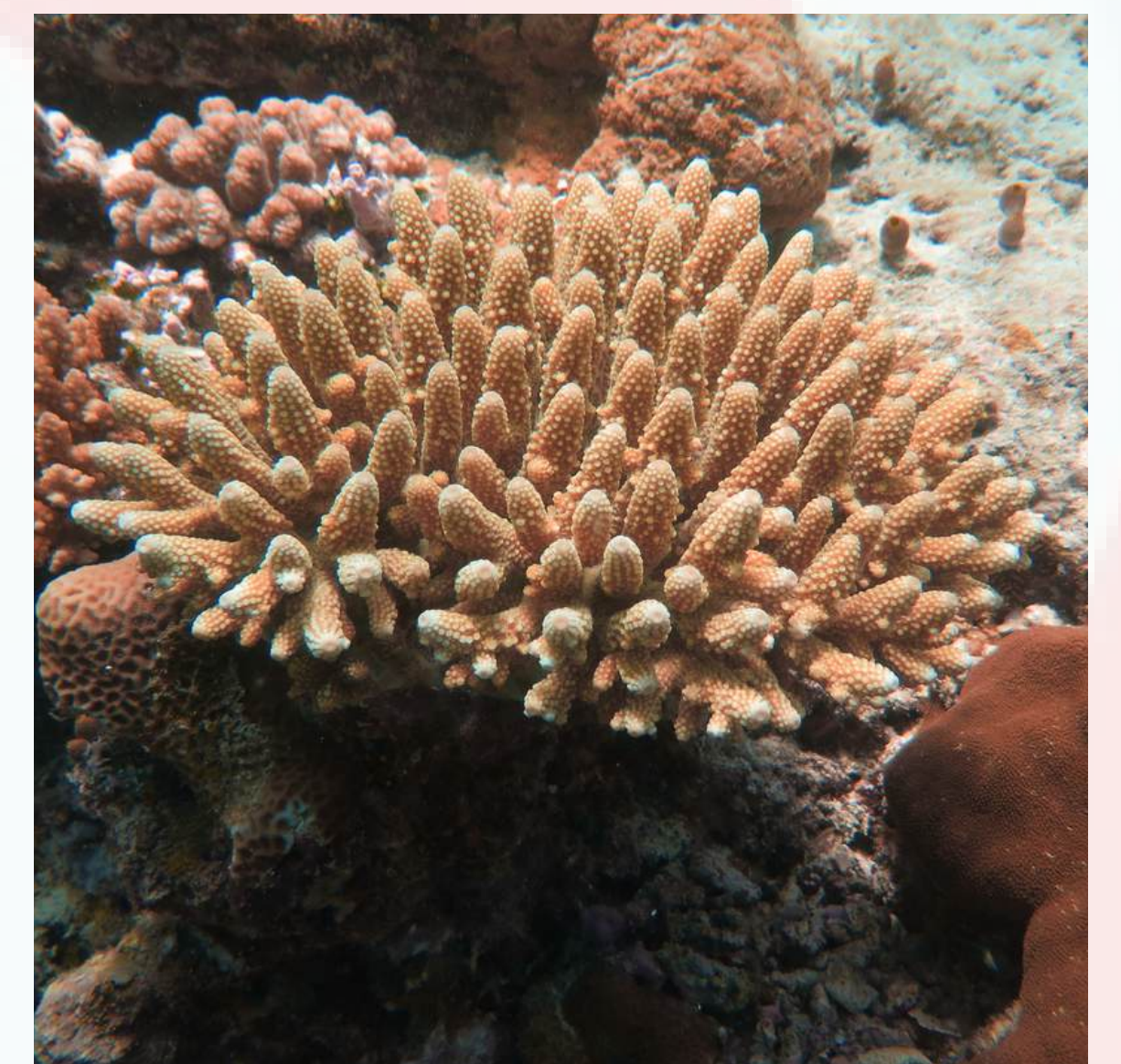


CC BY 2.0 - Ryan McMinds

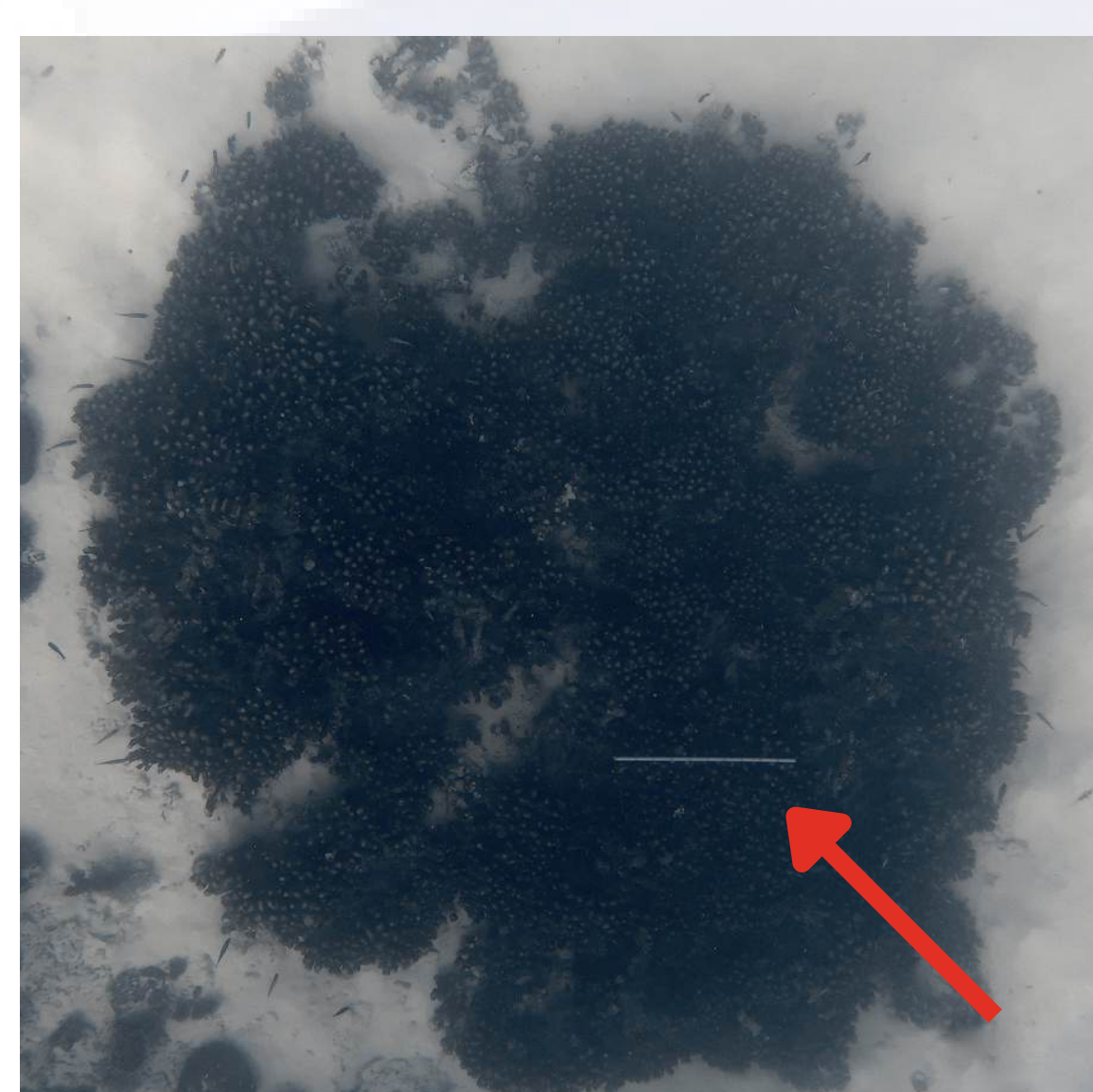
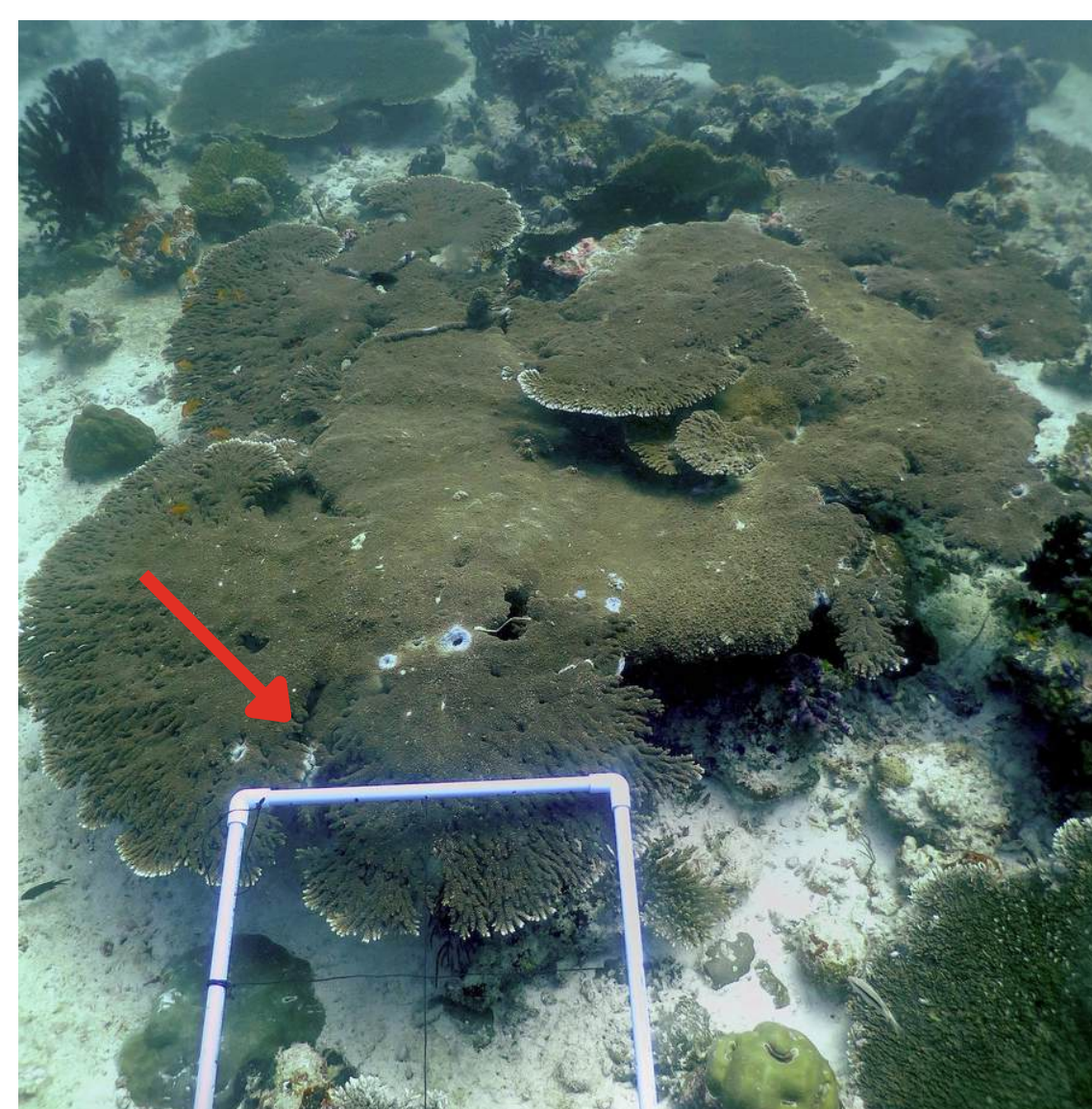
Branching



Digitate



- **Site**. Indicate the Island /Atoll, name of the reef and provide us with the
- **GPS coordinates**. Provide them with the best approximation;
- **Depth**. Estimate the depth at which the coral was sitting and of its upper part (meters);
- **Photo**. When taking photos, please include an object of known size such as a person (as close as possible to the colony without physical contact). This helps us validate your entry.
- **Videos** are very useful for a complete overview. Please send them to mapthegiants@unimib.it



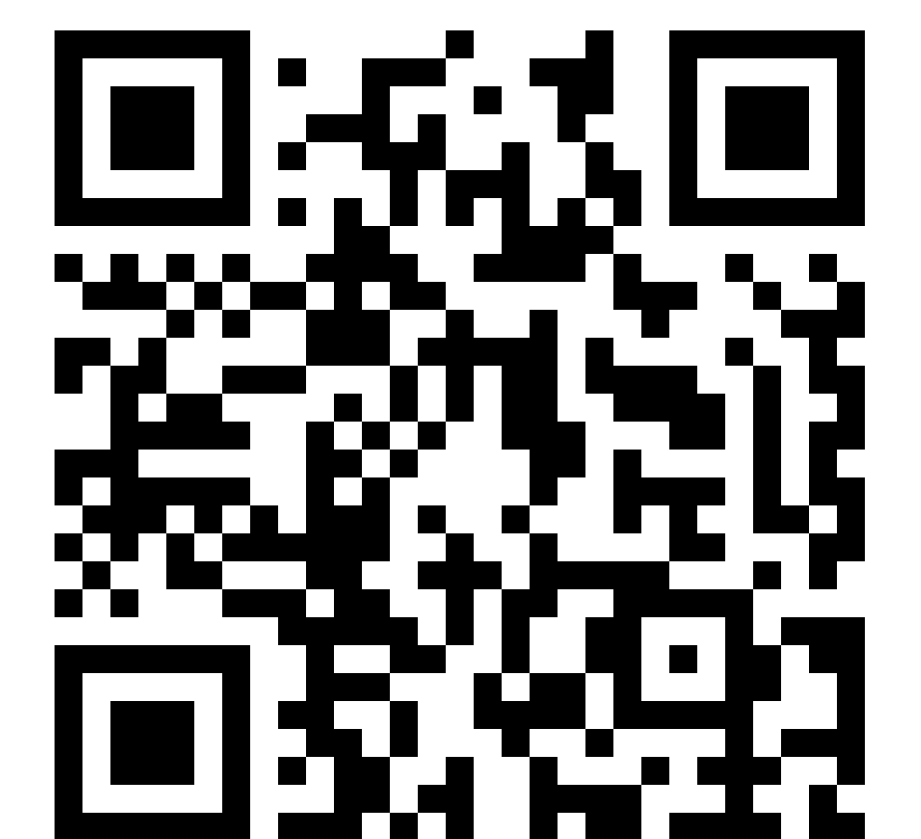
Please try to take a picture of the entire colony
Include an object of known size and let us know
the size in the note section.

**Photos are required for the entry to be
validated and included in our database.**

- Add any **note** on the colony.

MAKE AN ENTRY

Submit your data by scanning the **QR code** on the right or navigating
to **www.mapthegiants.com** under the section **Get Involved** **Share**



Get in touch:



mapthegiants@unimib.it



MAP THE
GIANTS

Powered by
MARHE