



# MAP THE GIANTS

## HOW TO SURVEY CORAL COLONIES

Help us locate a Giant Coral!

Please choose the type of survey that best suits you: simple, advanced or with a drone.

### **SIMPLE SURVEY. Diving or snorkelling**

This can be undertaken during any excursion and without any dedicated equipment.

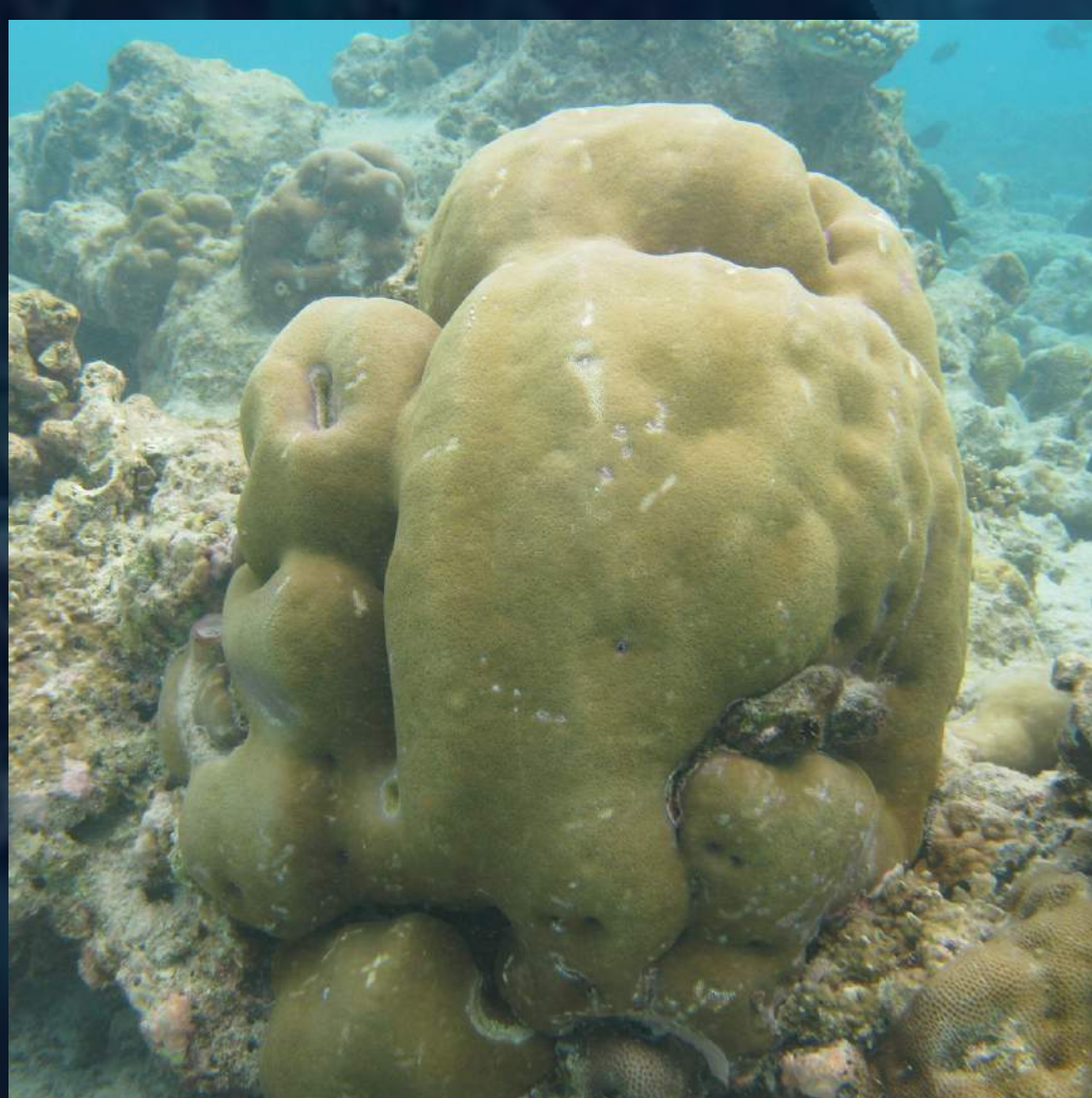
**!** Remember that we consider **GIANTS**, corals **OVER 5 METERS**

#### Steps to take:

- **Grab** your diving or snorkelling equipment and any safety tool you may require. If you have a waterproof camera, we highly recommend you to carry it along;
- **Head out** to the chosen reef;
- **Look out** for any large coral colony;

### WHAT IS A GIANT CORAL COLONY?

A giant coral is considered a colony **over 5 metres in size** and presenting a **continuous living surface**.



This colony originates from a single polyp and can grow in size indefinitely.

**This is ONE colony.**



The white mark is a scar, typical of two different colonies fighting and **growing side by side**. This is **NOT** a colony but two.

- Estimate the **size** of the diameter based on these size classes:
  - 5-10 meters
  - >10 meters

**GIANT CORALS.**  
**FUTURE MARINE**  
**MONUMENTS.**



- **Growth form:** choose between: **massive, encrusting, tabular, and foliose** which are the most likely growth forms for GIANTS (see first row of pictures below)

Massive



Encrusting



Tabular



Foliose



Branching



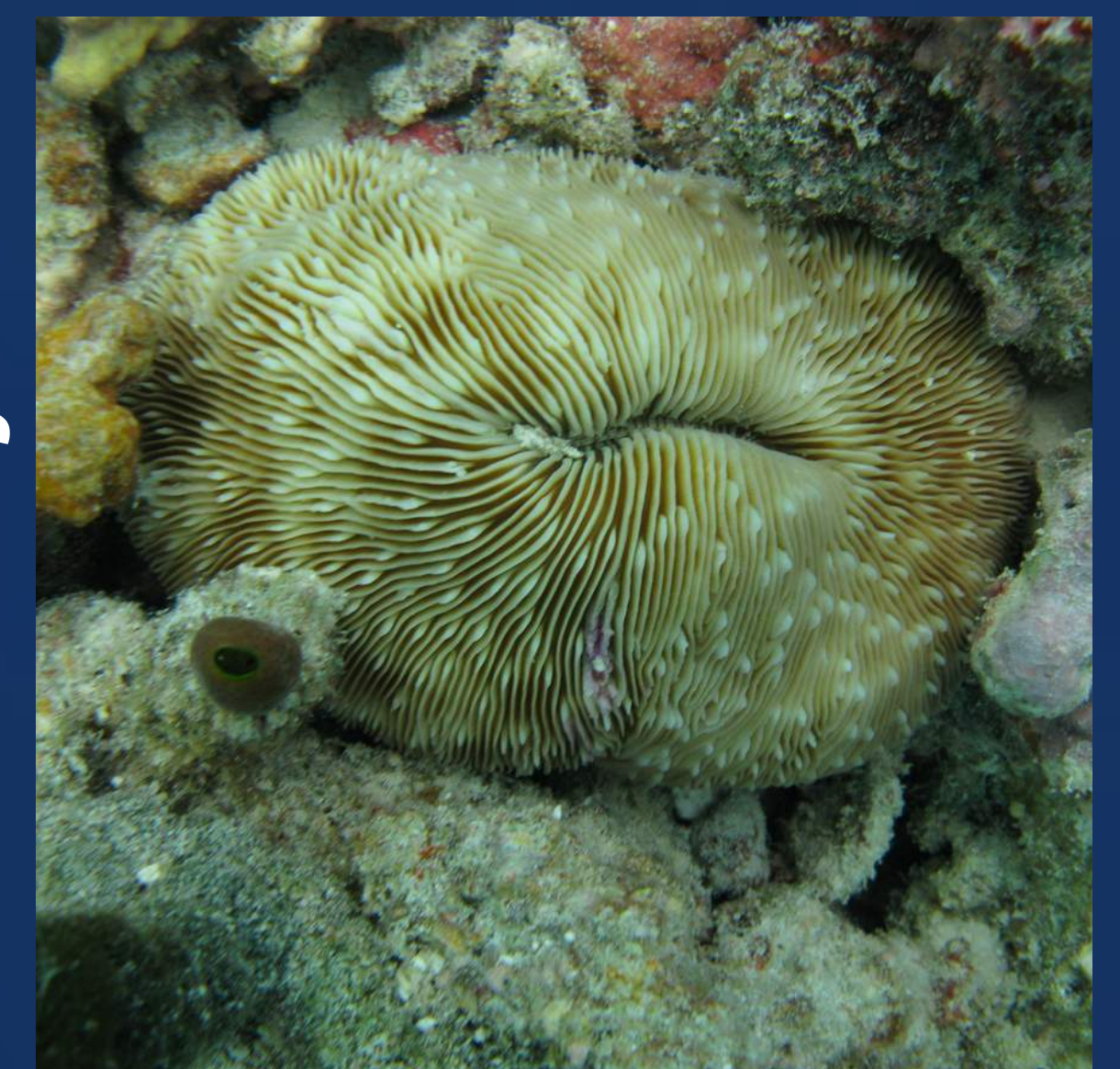
Digitate



Columnar

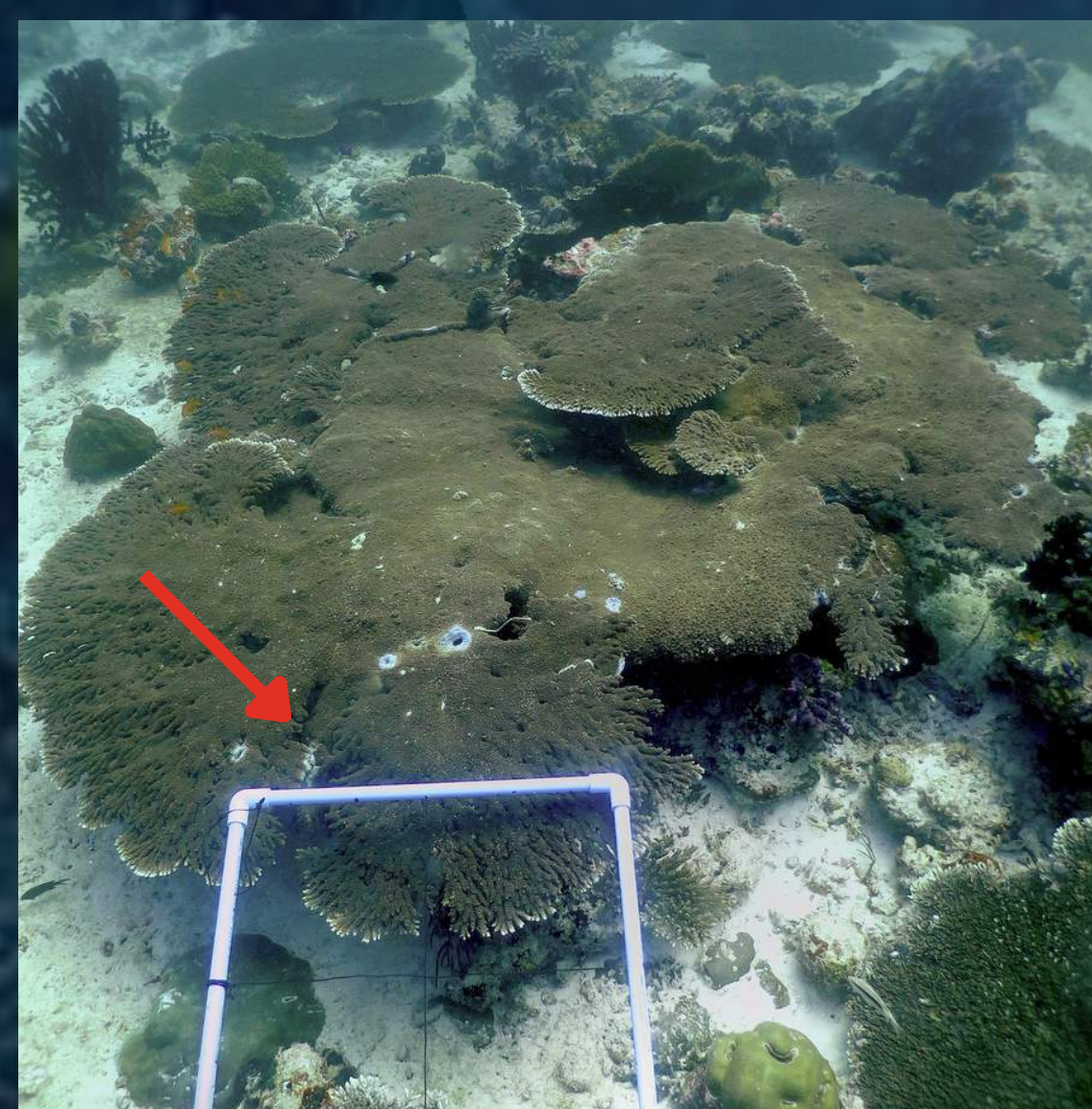


Solitary



CC BY 2.0 - Ryan McMinds

- **Location.** Indicate the Atoll, name of the reef and provide us with the GPS coordinates. Seek help from your guide to define the location with the best approximation;
- **Depth.** Estimate the depth at which the coral was sitting;
- **Photo.** When taking photos, please include an object of known size such as a person (as close as possible to the colony without physical contact). Scalable photo will enable us to gain additional information on the colony's conditions and the habitat



Please try to take a picture of the entire colony or multiple photos partly overlapping to allow us to stitch them together. Include an object of known size and let us know the size in the note section.

**Photos are required for the entry to be validated and included in our database.**

- Add any **note** on the colony.

## MAKE AN ENTRY

Submit your data by scanning the **QR code** on the right or navigating to **www.mapthegiants.com** under the section **Get Involved → Share**



Get in touch:



mapthegiants@unimib.it



MAP THE  
GIANTS

Powered by  
MARHE